



M4106 LPR-NVR

8-lane LPR with 24 Full HD channels

Comprehensive for a wider variety of parking applications

For years, GVD had engaged in video content analysis and reaped the preliminary harvest by introducing some sophisticated VCA features including Missing Object Search, Foreign Object Search, E-Fence and People Counting. The most recent grain GVD proudly crops is the **M4106 LPR-NVR**, a 2-in-1.

As a derivative from GVD 4K Mini Enterprise **M41 Series**, the **M4106 LPR-NVR** is hardware-wise not too heavy and not too light but comes just right. Software-wise the **M4106 LPR-NVR** is powered by GVD HD NVR, a suite of software programs including sophisticated VCA applications with outstanding LPR performance.

Supporting max. 48 full HD channels, the **M4106 LPR-NVR** can recognize a total of 16 car lanes and capture millions of snapshots.

This NVR also doubles as a 6-HDD server, which is simple, reliable and flexible, and very easy to scale up. You can expand your video system to 600 to 10,000 channels on GVD Central Management Platform.

If you are looking for a robust, reliable and flexible NVR for your massive LPR project, look no further than GVD's **M4106 LPR-NVR**.



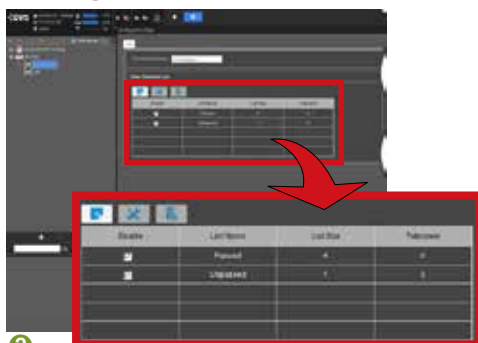
Software features

Interested vehicles detection

GVD LPR application lets you review the in-and-out records in your business premises effortlessly. You can create and import a list in the **NVR Manager** to get live notification of an interested vehicle. You can also run a search in the **NVR Manager's Alarm Mode** to retrieve the video of that vehicle passing through the gate as long as it is blacklisted or whitelisted in the **NVR Manager**.



- 1 First create an interest list with Excel



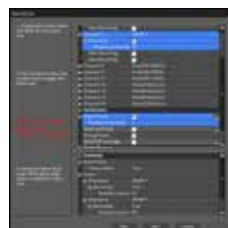
- 2 Then imports one or more interest lists in the software



- 3 The "Sidekick" highlights a matching vehicle when it passes through the gate.

Powerful data retrieval

Like GVD's other business computing features such as **POS** and **ATM**, GVD LPR also presents powerful data search and retrieval, including search by time, by a license plate or by interest lists. GVD makes it even more simple to retrieve data with a "fuzzy search", which finds a string not exactly matching the whole criterium but allows a character mismatching.



- 1 First use the Rule Wizard to create an LPR event rule.



- 2 Then retrieve associated video with the software's Alarm Mode to track the activity of an interested vehicle.

Live notifications for 1st responders

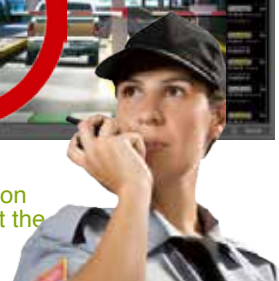
The **NVR Manager** lets you define LPR events to trigger alarms, such as license plate hits or suspect vehicle alert so a pre-defined action can be taken such as shutting down vehicle gates or activating intercoms through the control center.



- 1 First use the Rule Wizard to create an LPR event rule.



- 2 Get live notifications on screen about the tracked car.





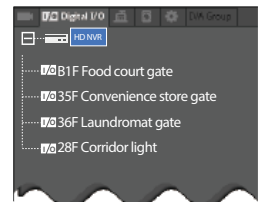
Software features

A deeper look into LPR events

On the NVR, you can query LPR events (by time, by a plate number, or by an interest list) as long as you have an associated rule set up in the software. On the **Central Management Platform**, however, you can take a deeper look into these events by documenting your observation on-video with a text comment, video or screenshot, and export a series of such document to an interactive PDF file which includes not just text description and support images but also hyperlinks that bring you quickly to an associated video.

Quick integration with 3rd-party systems

The **M4106 LPR-NVR** comes with Modbus support, the most popular and widely used serial-comm protocol. The NVR has a Modbus Slave to collect status data from a video channel while the **Central Management Platform** supports Modbus Master & Slave to send & receive 3rd-party system data, and the open platform design also saves much trouble.



Layer 1

Easy query on the NVR



- 1 First use the Rule Wizard to create an LPR event rule.

Layer 2

Deeper look into LPR events on the *Central Management Platform*

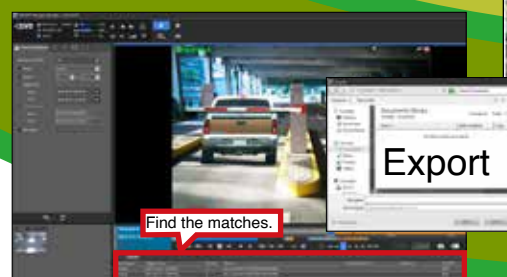


You can compile and export a series of notes to a PDF file with interactive hyperlinks that bring you quickly to an associated video.



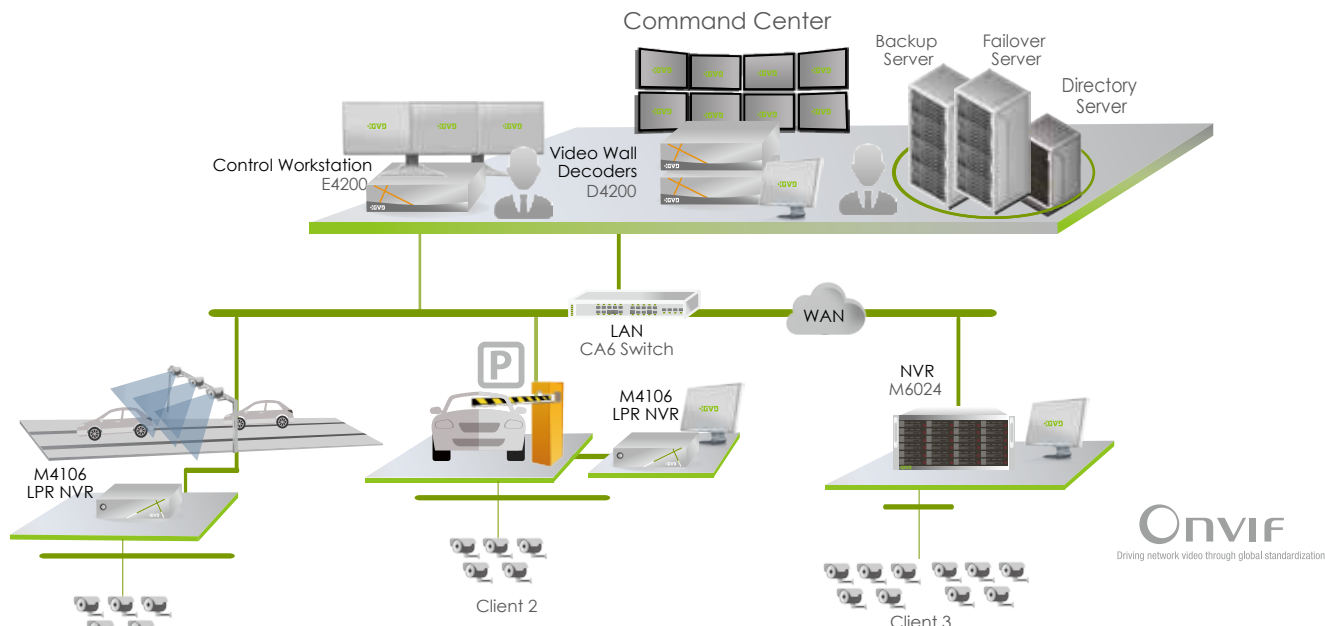
- 2 Then run a search for LPR alarms in the software's Alarm Mode.

- 3 Finally find the matches and export.

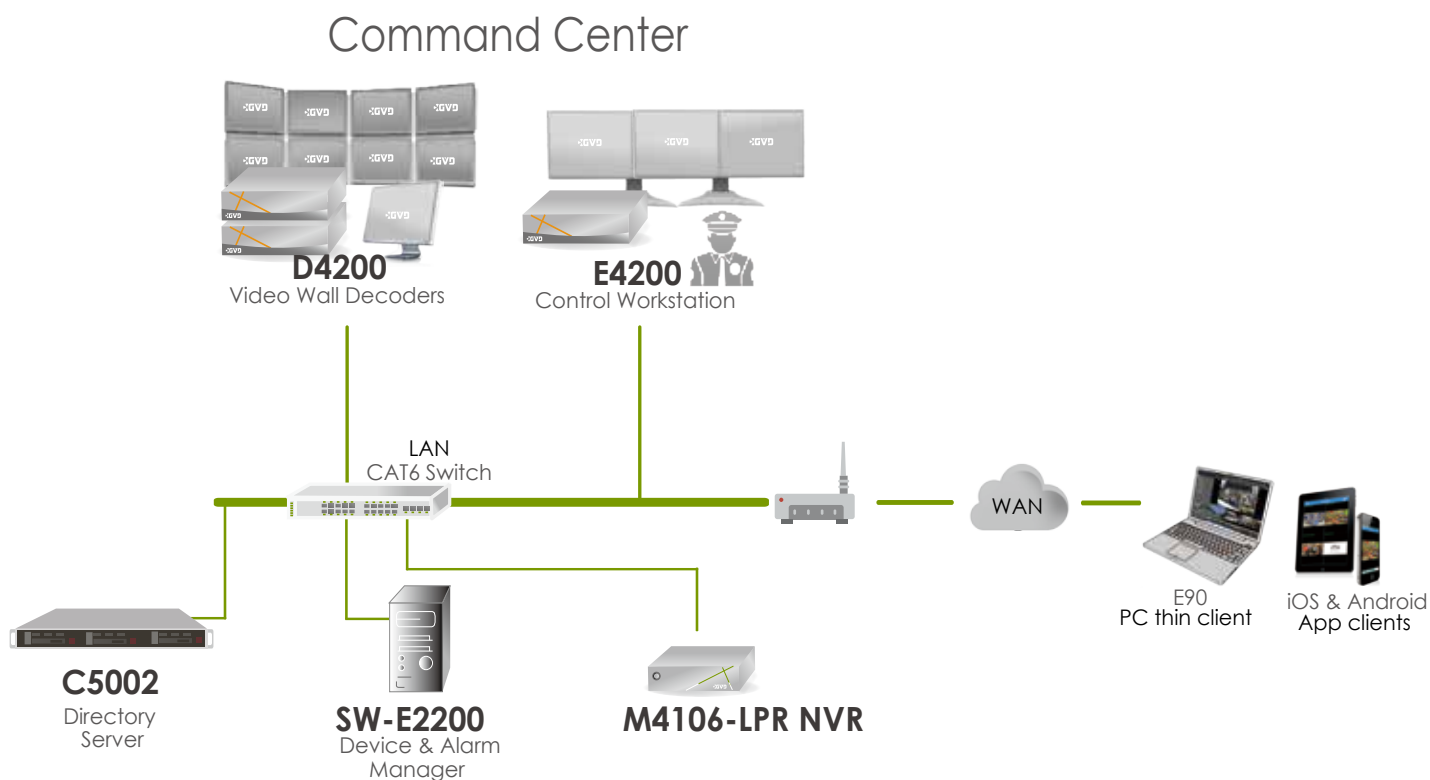


System architecture

GVD Central Management Solution for 600~10,000 channels



Remote clients



M41 LPR-NVR

Specifications



Model name		M4106 LPR-NVR EOL
Order information		M4106-C024-LPR04 EOL M4106-C024-LPR08 EOL M4106-C016-LPR04 EOL
Description	LPR NVR	
System	CPU	Intel® Core™ i5-6500
	Memory	8G
	Operating System	Windows 7 Embedded
	Watchdog	Hardware watchdog & software watchdog
Storage	Interface	3.5" SATA HDD
	Hard disk trays (bays)	6 pcs
	Storage capacity	6 x 10TB
	RAID level	NA
Display	Output	1 x VGA, 1x DVI-D, 1 x HDMI, 1 x DisplayPort
	Multi-displays	2 x HD displays or 1 x HD + 1 x 4K displays
	Local display resolution	4096 x 2304 4K Monitor
Interface	USB port	Front: 2 x USB3.0; Rear: 6 x USB3.0 & 2 x USB2.0
	Audio port	Rear: 1x mic-in, 1x line-out, 1 x line-in
	Serial COM port	NA
Network	LAN port	2 x Gigabit Ethernet
Power	Voltage	100~240V
	Avg. consumption (w/o HDD)	< 135W
Environment	Operating temp.	0°C~40°C (32°F~104°F)
	Storage temp.	-10°C~60°C (14°F~140°F)
	Operating humidity	0%~90%
	Storage humidity	5%~95%
Mechanic	Certification	CE, FCC, EN50130
	Dimensions (W)x(H)x(D)	429 x 87.1 x 540 mm
	Net weight w/o HDD	12 kg

Software				
Video recording	IP camera license (cam channels / LPR channels)	24/04	24/08	16/04
	Recording rate	Max. 192Mbps		
	Recording resolution	D1, 1.3~20 megapixels		
	Recording mode	Full-time recording, manual recording, recording by schedule, event, alarm, video motion detection		
	Video codec	H.265, H.264, MPEG4, M-JPEG, MxPEG		
	Audio codec	G.711, G.726, AAC		
	Streaming type	Unicast & multicast		
Video display & management	Local display (AVS enabled)	700fps@D1, 400fps@Full HD		
	No. of live video streams	128		
	Display pattern	1, 2, 3, 4, 5, 6, 8, 9, 12, 13, 16, 18, 24, 25, 36, 48, 64		
	Live-view operation	ROI, ePTZ, corridor mode, software de-warp, digital zoom in/out, onscreen PTZ		
	ONVIF	ONVIF 2.6+, Profile-S		
	Synchronous playback	Up to 16ch		
	Playback controls	Forward/backward playback, pause, jump to next/previous frame, go to date, speed controls, go to some time later/ago (0.5/1/5 minutes)		
	Video export	Via USB (*.AVI, *.AVA & *.MKV supported), digital watermark		
	Video search	By time, alarm, event, missing object, foreign object, E-Fence, people counting, transaction data from POS		
PTZ	Controlling device	Mouse, K205 Keyboard		
	Operation	Direction controls, zoom in/out, preset, patrol		
VCA	Features	License Plate Recognition, E-Fence, video motion detection, people counting, missing/foreign object search		
	Event search	Search for a missing or foreign object; search for an event of people counting, video motion, or E-Fence		
	Trigger source	Video loss, sensor trigger, HDD crash, system crash, abnormal transaction from POS, E-Fence, video motion detection, people counting		
	Reaction	User-definable text message, video pattern popup, e-mail, output alarm signal, trigger recording, PTZ preset		
	Setup	A Rule Wizard for flexible setup		
Alarm	Trigger source	Video loss, sensor trigger, HDD crash, system crash, abnormal transaction from POS, E-Fence, video motion detection, people counting		
	Reaction	User-definable text message, video pattern popup, e-mail, output alarm signal, trigger recording, PTZ preset		
	Setup	A Rule Wizard for flexible setup		
	I/O module	48 x inputs; 48 x outputs		
Remote access clients	Web client	IE 9.0, 10.0, 11.0		
	APP client	iOS 10 and above; Android 5.0 and above		
	PC thin client	VMS(E4200), CMS(SW-E2200-CW03), CMS Lite (E90-Window 8 & 10)		
	Number of clients	5		
POS	License	8 units		
	Integration	Integrable with all brands via POS filters		
	Transaction (data) view	Pattern-view with both transaction data and relevant videos		
	Data search/retrieval	Search by time, keyword or price to retrieve transaction data with relevant video		
	POS alarm	Alarm setup by item or value; supporting popup alarm, email alarm, text message alarm, etc.		
System	System update	NVR software update		
	Backup & recovery	Yes, by VHD (virtual hard disk)		
	Event logs	Event logs of system, cameras, users, etc.		
	Languages	20+ languages are supported, including English, Spanish, French, Dutch, Italian, Japanese, Chinese, etc.		

* All specs are subject to change without notice.

Dimensions

